

**1:20,000 RECONNAISSANCE FISH AND FISH HABITAT INVENTORY**  
**ZYMOETZ RIVER WATERSHED**  
 440-000000

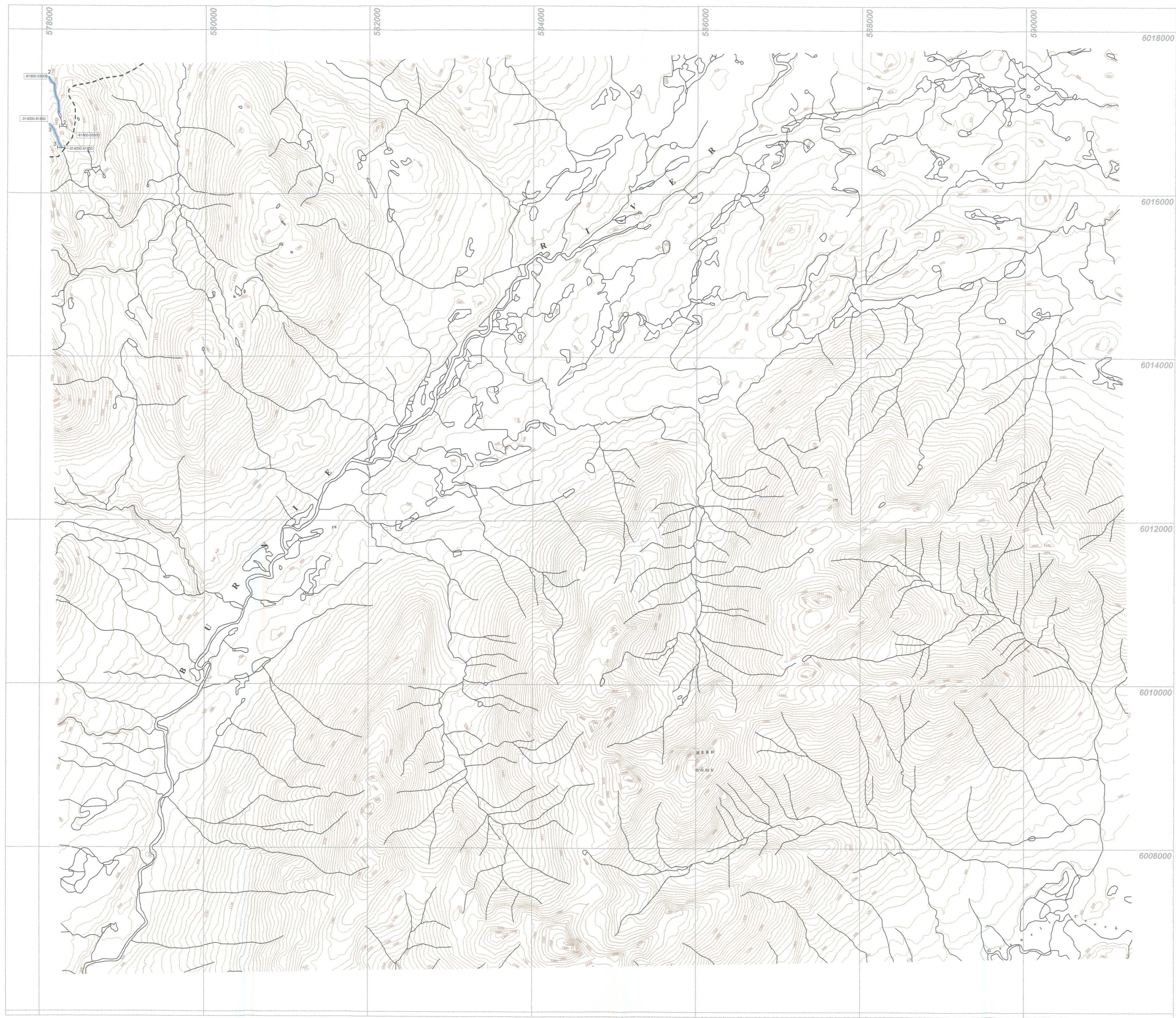
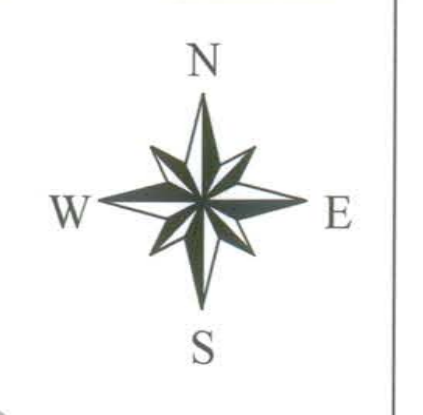
**KITNAYAKWA PLANNING AREA**  
 FISHERIES / INTERPRETIVE MAP  
**SKEENA CELLULOSE INC.**  
**KALUM FOREST DISTRICT**  
 1999

**MAPSHEET # 93L022 Map 9 of 9**

Scale 1:20,000  
 Contour Interval (20m) Projection UTM

Date: 2000/02/01 (yyyy/mm/dd)

Company: *AW* of **TRITON** Environmental Consultants Ltd.



**STREAM INFORMATION SUMMARY**

Interim Locational Point (ILP) 12345 Watershed Code 123-123456-12345

Reach Summary Symbol: Fish Code(s) CO DV RB 2-12 S2

Channel Properties: Gradient Channel Width Stream Classification

Sample Site ID 15 Sample Site 123-123456-12345 Watershed Code Waterbody Identifier

Lake Summary Symbol: Lake (L) or Wetland (W) Surface Area Maximum Depth pH Conductivity TDS Littoral Area L-175-8.0-6.8-23-20-15 CSU NFC NSC PCC RSC RB WSU Fish Code(s)

Stream Reach Boundary

**Obstructions**

- Beaver Dam
- Cascade
- Eroded Bank
- Alluvial Fan
- Colluvial Fan
- Talus Cone
- Rock Outcrop
- Slumping Bank
- Falls
- Culvert
- Shump
- Bedrock - confined
- Landslide Debris
- Landslide Area
- Canyon
- Braided Stream
- Persistent Debris Accumulation
- Dam
- Rapids
- Wetland / Marsh
- Subsurface Flow
- Tributary
- Dewatered Section
- Side Channel

**Enhancement / Management Activities**

- Fisheries Sensitive Zone

**WSC Information**

12AB123 Hydrometric station

**Stream Classification**

- Fish Present (Confirmed)
- Fish Not Present (Confirmed)
- No Visible Channel
- Fish Present (Inferred)
- Fish Not Present (Inferred)

**TRIM Base Map Anomalies**

- Field-Identified Stream
- Base Map Discontinuity

**Base Map Features**

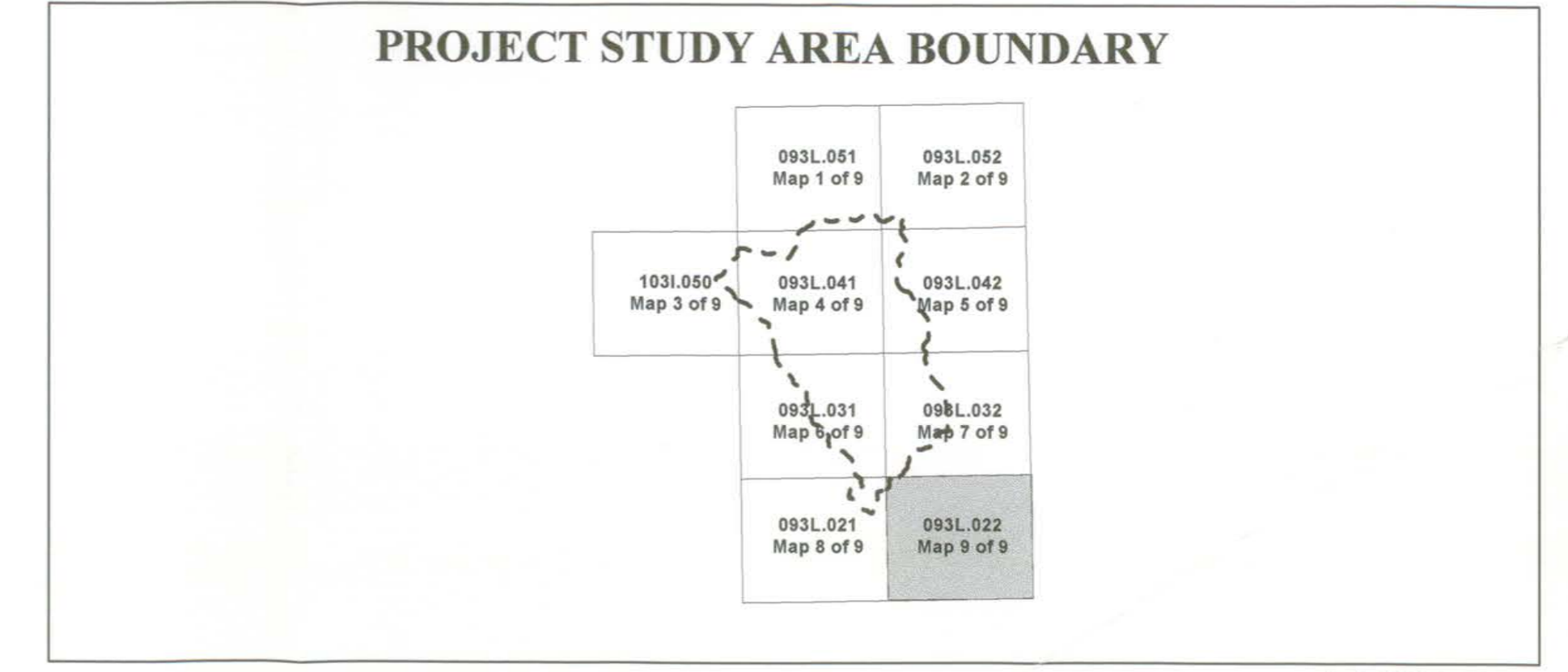
- River / Stream
- River / Stream - intermittent
- River / Stream - indefinite
- Lake
- Lake - intermittent
- Lake - indefinite
- Marsh
- Swamp
- Glacier
- Icefield
- Sand / Gravel Bar
- Island
- Road - loose surface
- Road - rough surface
- Index Contour
- Index Contour - indefinite
- Project Boundary

\* NOTE : Gradients were calculated from TRIM maps during planning Phase 1.2.3 of this project.

**FISH SPECIES**

Present		Historical	
CODE	DESCRIPTION	CODE	DESCRIPTION
NFC	No Fish Caught	Y	End of Fish Use/No Fish Use
NS	Not Sampled	Y	Fish Presence - Salmon
NFU	No Fish Use	Y	Fish Presence - Sport
RT	Bull Trout	Y	Fish Presence - Regionally Significant
CH	Chinook Salmon	Y	Fish Presence - Other
CO	Coho Salmon	Y	Fish Observation - Salmon
CT	Cutthroat Trout	Y	Fish Observation - Sport
DV	Dolly Varden	Y	Fish Obs. - Regionally Significant
RB	Rainbow Trout	Y	Fish Observation - Other
EFU	End of Fish Use	Y	Fish Spawning Limit - Salmon
		Y	Sample Site - No Fish Use

Source: MBLP



"This product has been accepted as being in accordance with approved standards within the limits of Ministry quality assurance procedures. Users are cautioned that interpreted information on this product developed for the purposes of the Forest Practices Code Act and Regulations, for example stream classifications, is subject to review by a statutory decision maker for the purposes of determining whether or not to approve an operational plan."

**INVENTORY SOURCE INFORMATION CODES**

CODE	DESCRIPTION	CODE	DESCRIPTION	CODE	DESCRIPTION	CODE	DESCRIPTION
BASE	Base Map	IKSYM	Lake Symbol	APP	Airphoto, Planimetric	AP	Aerial Photography
TRIM	1:20,000 TRIM Maps	INV	Fish Inventory	VPC	Video, Approximate	VID	Video
NTS	1:50,000 NTS Maps	SS	Summary	YPC	Video, Corrected	PHIL	Fish Information
OTH	Other Map Source	N/A	Not Applicable	OTH	Other	INVD	Detailed Field Inventory
STRSYM	Stream Symbol	OTH	Other	HAB	Habitat Information	INVO	General Field Inventory
INV	Field Inventory	LOC	Location Information	ENV	Field Inventory	SS	Summary
SI	Summary	FIE	Field Estimate	SS	Summary	N/A	Not Applicable
N/A	Not Applicable	FPO	Field, GPS	N/A	Not Applicable	OTH	Other
OTH	Other	APE	Airphoto, Estimate	OTH	Other	DATE INV	Date of Inventory

**FOREST PRACTICES CODE RIPARIAN CLASSES (STREAM CLASSIFICATION)**

Riparian Class	Average Channel Width (m)	Reserve Zone Width (m)	Management Zone Width (m)	Total RMA Width (m)
S1 Large River	> 100	0	100	100
S2 Large River	> 20	0	20	20
S3	> 5 < 20	0	20	20
S4	< 5	0	20	20
S5	> 3	0	20	20
S6	< 3	0	20	20

**BASE MAP INFORMATION**

Projection: *UTM*

Datum: *NAD83*

UTM Zone: *9*

**INVENTORY SOURCE INFORMATION**

BASE: *TRIM* STRSYM: *INV*

LOC: *FDE* LKSYM: *INV*

HAB: *INV* FISH: *INVD*

DATE INV: *1999/09/01* INV MGNT: *OTH*